

# LOWER WALL FRAME LAYOUT

CEILING HEIGHT - 2700mm

## STRUCTURAL DETAILS

T & B PLATES 90x35 MGP10 UNO  
EXTERNAL STUDS 90x35 MGP10 @ 600 CTS UNO  
STUDS POSITIONED DIRECTLY BENEATH RAFTER/TRUSSS @ MAX 600MM CTS  
INTERNAL STUDS 90x35 MGP10 @ 600 CTS UNO  
STUDS BLOCKED OVER 2 SINGLE 90x35 MGP10 STUDS

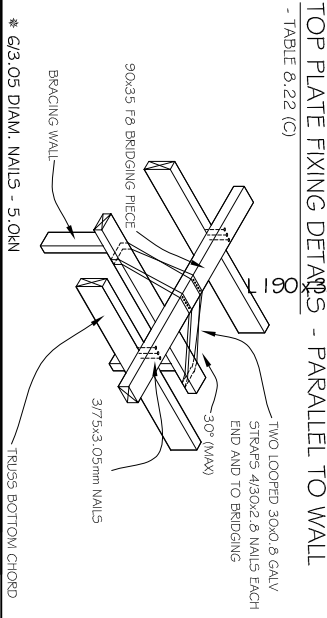
WITH 90x70 MGP10 BLOCKING  
NOGGING 90x35 PINE @ 1350 MAX CTS  
1/90x35 MGP10 DIRECTLY BENEATH INTERNAL SUPPORT  
ALL STRUCTURAL MATERIAL TO BE MGP10, UNO, SILL  
TRIMMERS DOUBLED WHERE OPENING < 3.0 m5  
JOINT GROUP=JD5

ALL MATERIALS ALLOWED AS PER AS 1684.2-2010 ROOF COVERING :  
NON-LOAD BEARING WALLS UNDER  
TRUSSES SET DOWN 20mm

STUDS AT SIDES OF OPENINGS  
AND POINT LOAD STUDS  
AS SHOWN BELOW

CEILING HEIGHT :  
OVERHANG :

25 deg  
2700 mm  
450 mm



PB 240 x 42 105P

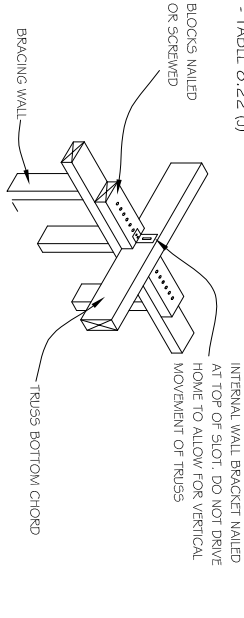
PB 240 x 42 105P

PB 240 x 42 105P

\* 6/3.05 DIAM. NAILS - 5.0kN

TOP PLATE FIXING DETAILS - PERP. TO WALL

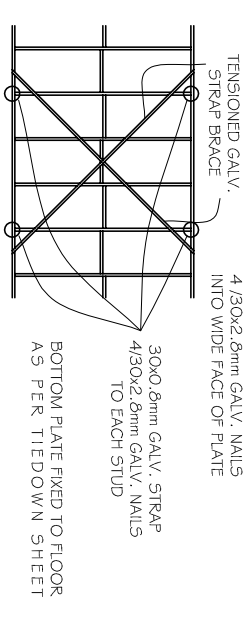
- TABLE B.22 (I)



\* 6/3.05 DIAM. NAILS - 5.0kN  
\* 3/IN6.14 TYPE 17 SCREWS - 1.0kN

## BRACING UNITS

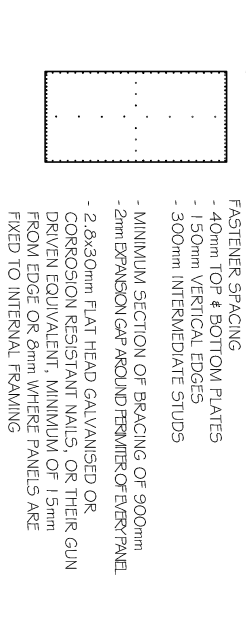
TENSION STRAP BRACE - TABLE B.18 (D)



☒ - 1800mm (5.4kN) ☒ - 2100mm (6.3kN)

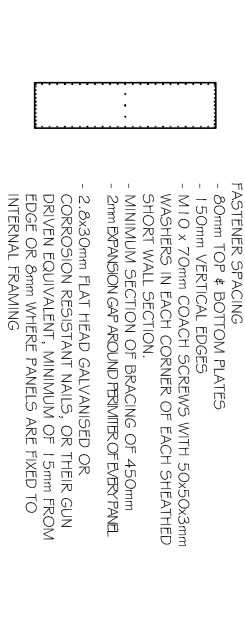
☒ - 2400mm (7.2kN) ☒ - 2700mm (8.1kN)

OS BRACE TYPE #3 | SYSTEM 6.0kN/m OR EQUIVALENT



☒ - 900mm (5.4kN) ☒ - 1200mm (7.2kN)

OS BRACE TYPE #4 | SHORT WALL BRACING | SYSTEM 2.2kN/m OR EQUIVALENT



☒ - 450mm (1.0kN) ☒ - 600mm (1.3kN)

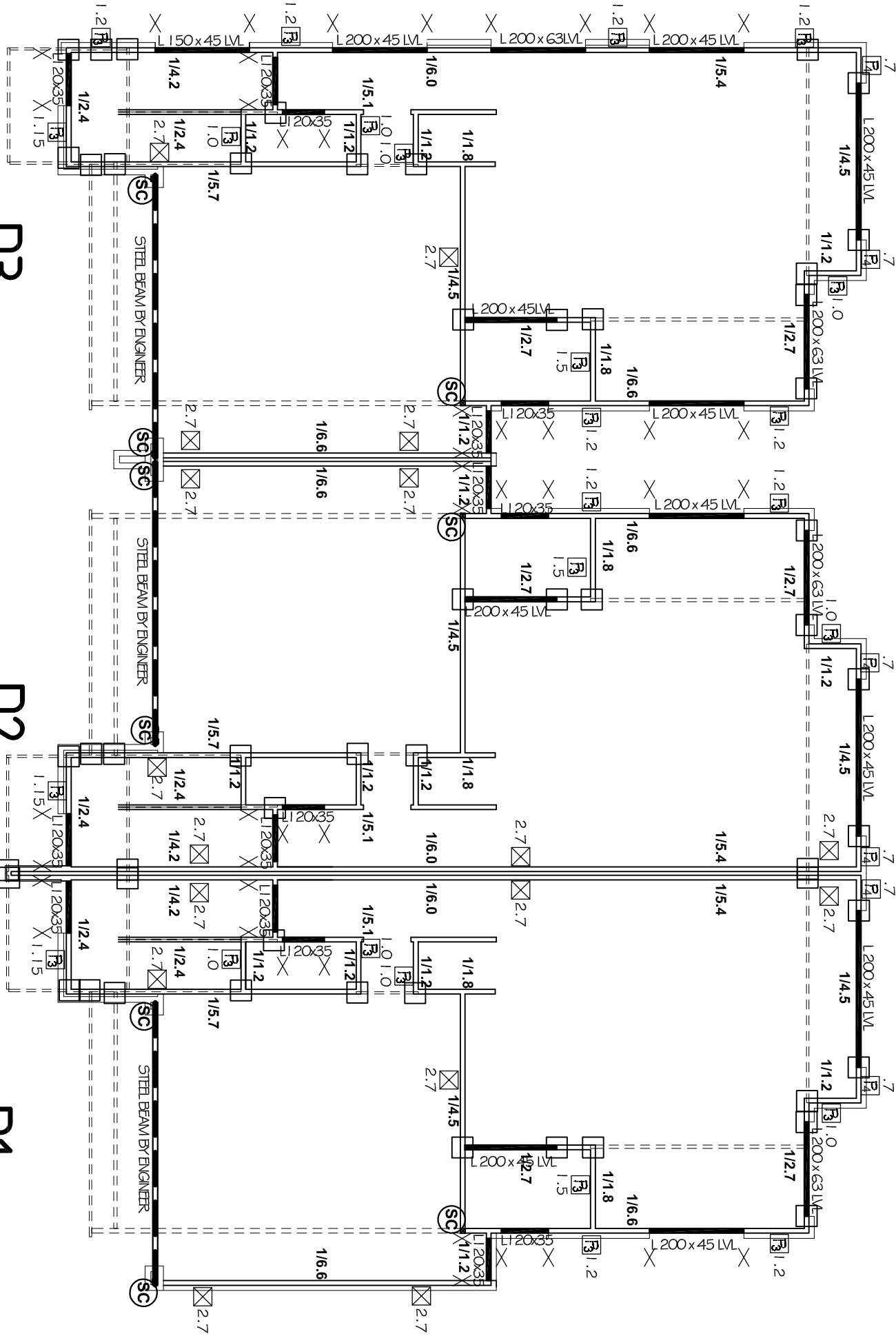
○ ADDITIONAL ANGLE BRACE

WINDSPEED (per residence) : NI

W1 42 m² = 24 kN

W2 79 m² = 44 kN

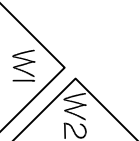
S:\OAKRIDGE TAKEOFFS\D\ANDREA\50-52 WINDSOR ST\DWLG 1-3\DWLG 1-3 50 WINDSOR ST.dwg




D3

D2

D1



D'ANDREA	WP PROPERTY GROUP 50-52 WINDSOR ST , MAGILL	AMENDMENTS	SHEET 1/5		WINDSPEED (per residence) :  N I
			DATE : 07/12/18		
	SCALE: 1 : 100		W1 42 m² = 24 kN		
	JOB No. TTO23G0112				
Detailer: Matt Opie  Signed: 		FRAMING AMENDED 14/02/2019 ..... ..... .....		PH : 83837222      FAX : 83837225	W2 79 m² = 44 kN